

ACADEMIC PARENT- TEACHER TEAMS

WELCOME!!!!!!!!!!!!!!!

WHY ARE WE HERE????????????

Benefits of Academic Parent-Teacher Teams

- Increase in parent-teacher communication and interaction
- Increase in parent engagement in student learning
- Increase in student engagement and confidence
- **MOST IMPORTANTLY, INCREASE IN STUDENT ACHIEVEMENT**

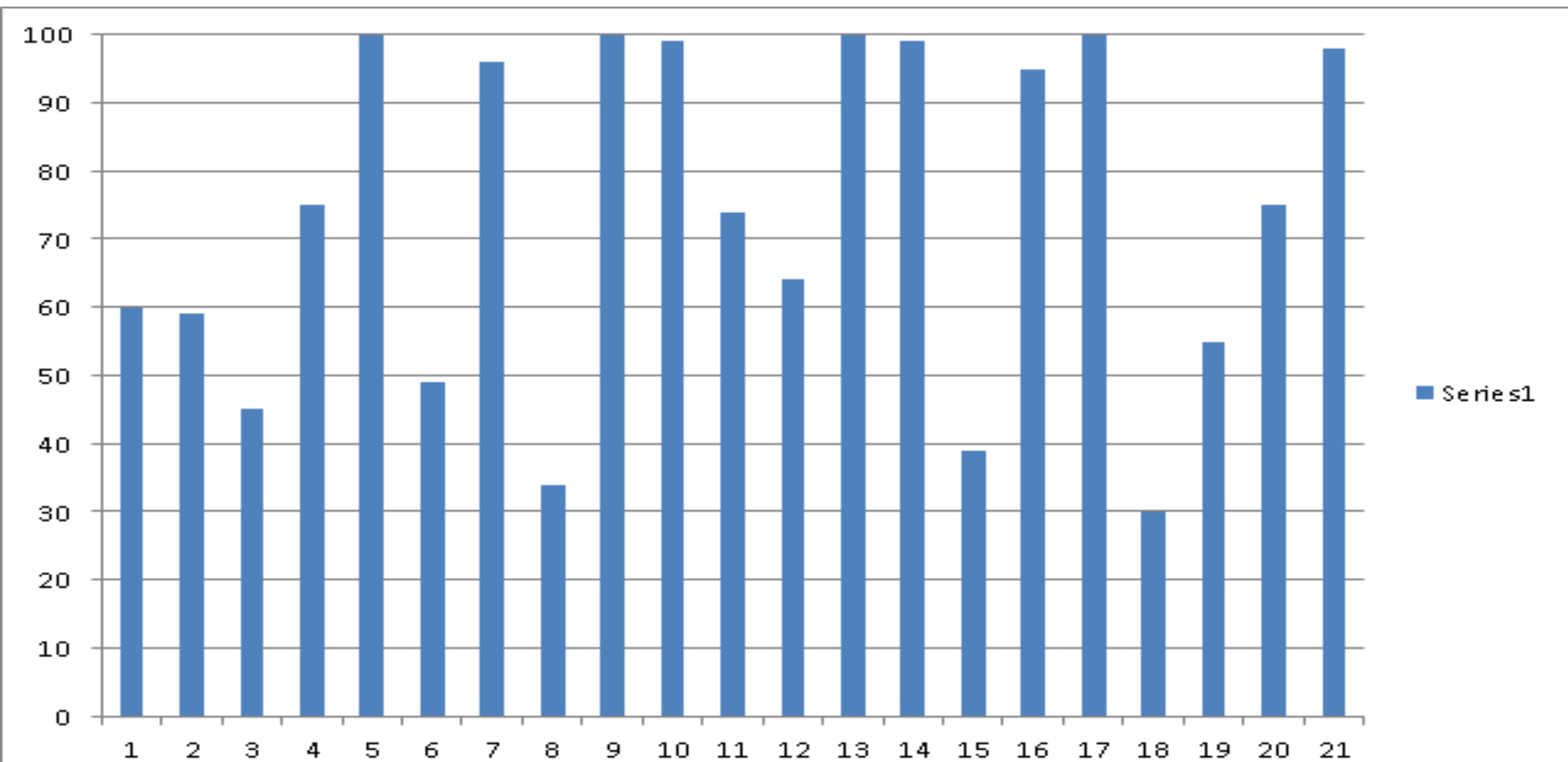
MOST IMPORTANT MATH SKILLS TO KNOW BY END OF 5TH GRADE:

- **MULTIPLICATION FACTS**
- **DIVISION FACTS**
- **Common Fraction, Decimal, Percent Conversions**
- **Common Measurement Conversions**

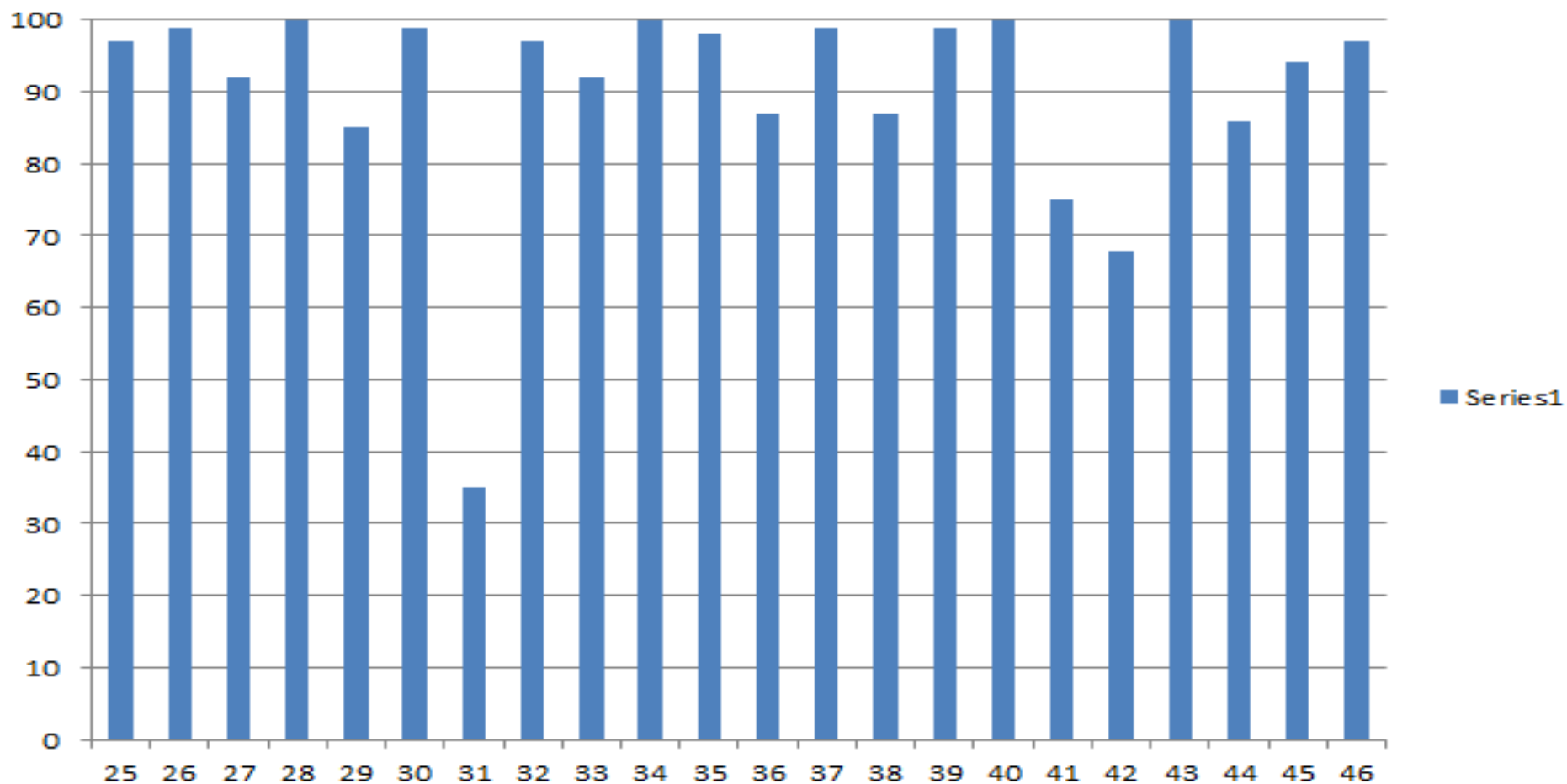
TONIGHT'S AGENDA

- Look at your child's BASELINE MATH DATA/MAP DATA
 - Multiplication Facts
 - Division Facts
 - Fraction/Decimal/Percent/Conversions
- Show you ways you can help your child at home and ways they can help themselves
- Create MEASURABLE and REALISTIC GOALS for your child

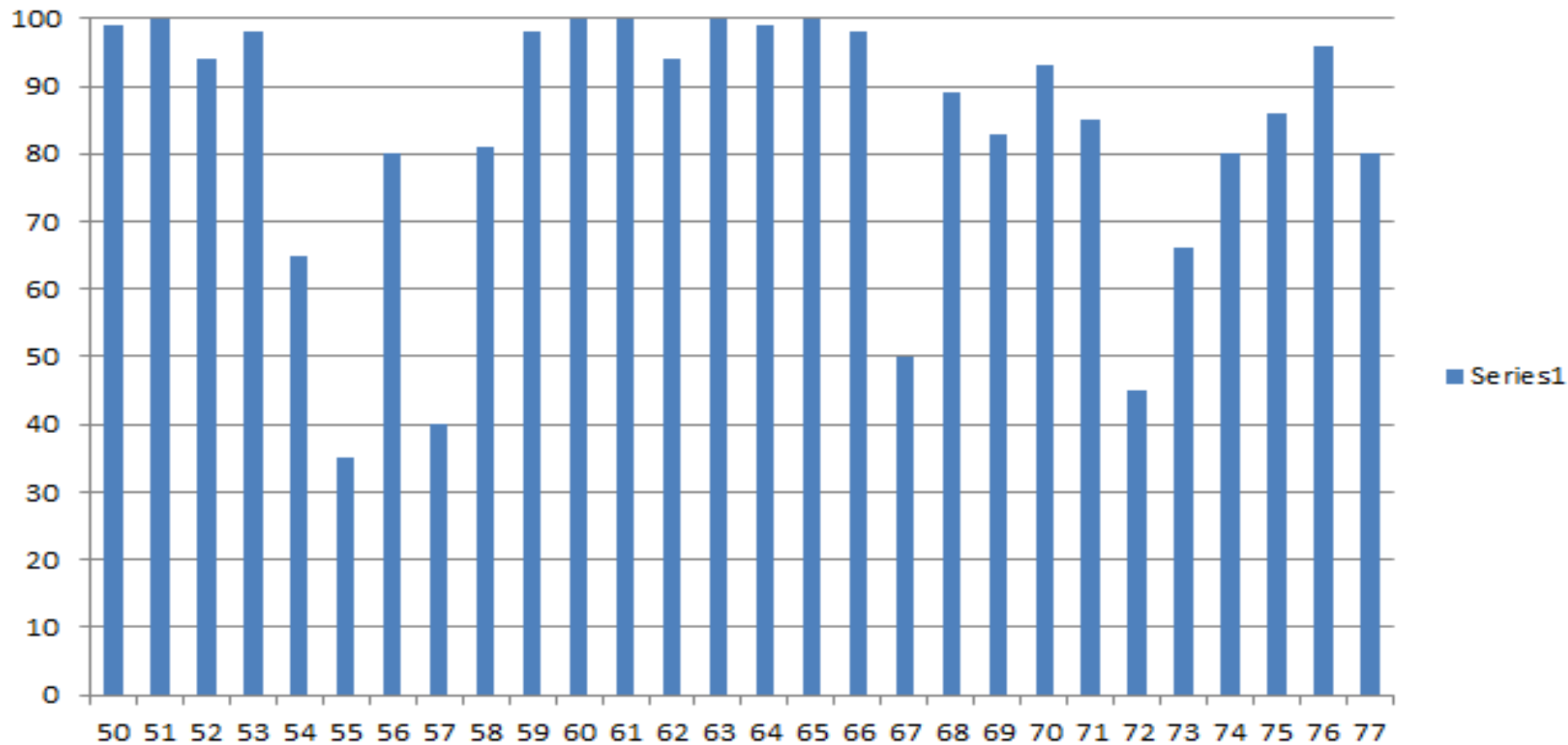
TIER 1 - MULTIPLICATION - BASELINE DATA



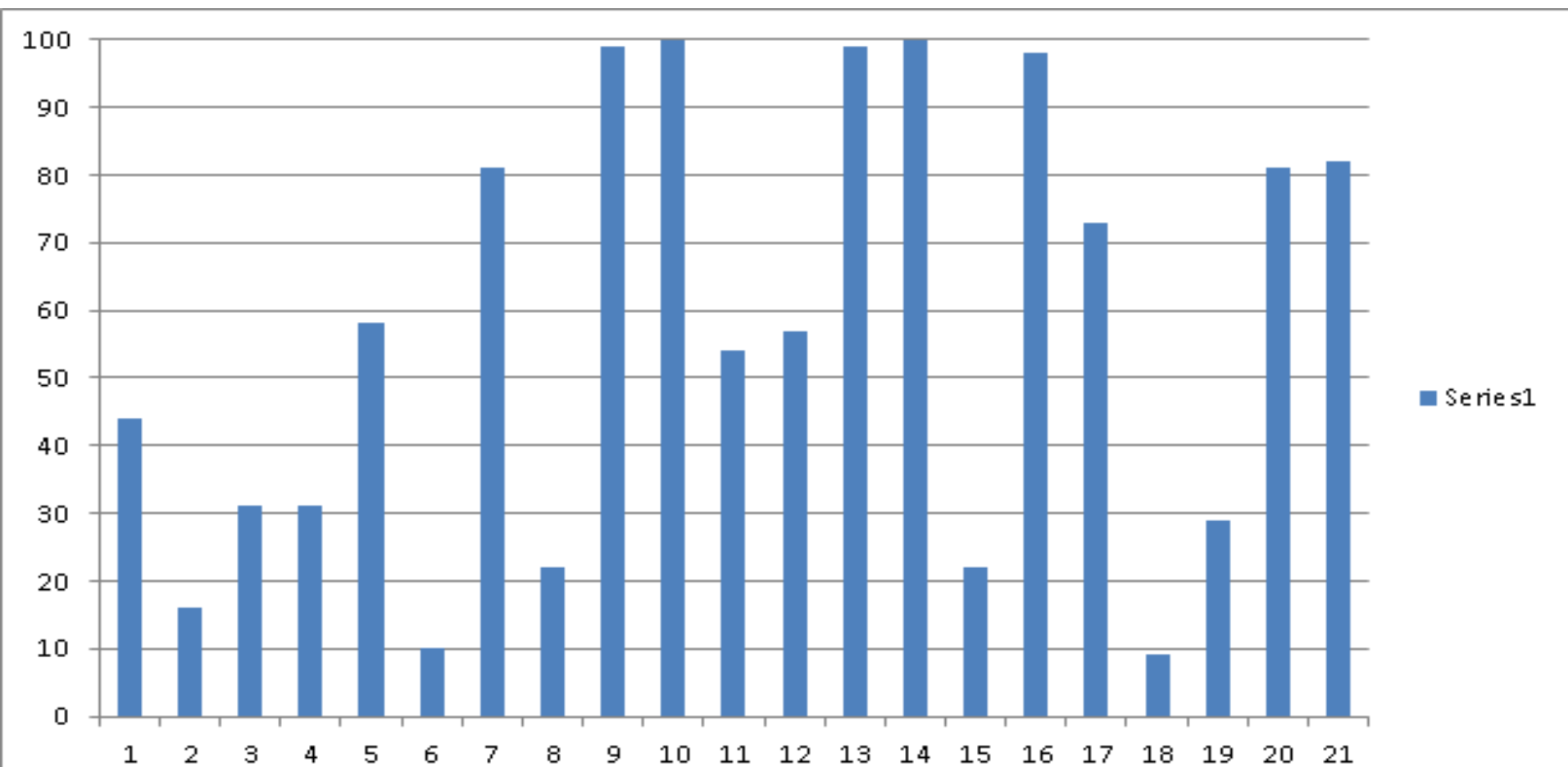
TIER 1 - MULTIPLICATION - BASELINE DATA



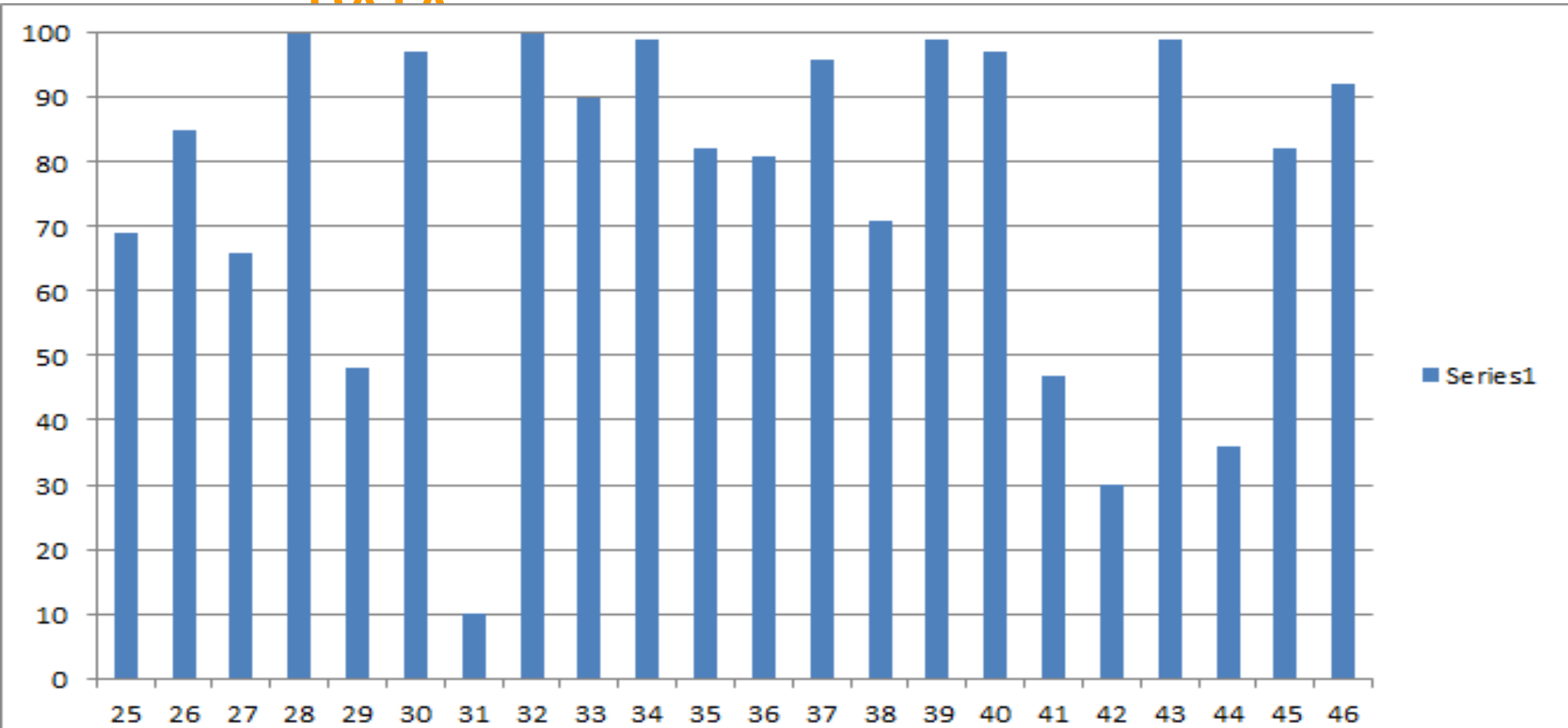
TIER 1 - MULTIPLICATION - BASELINE DATA



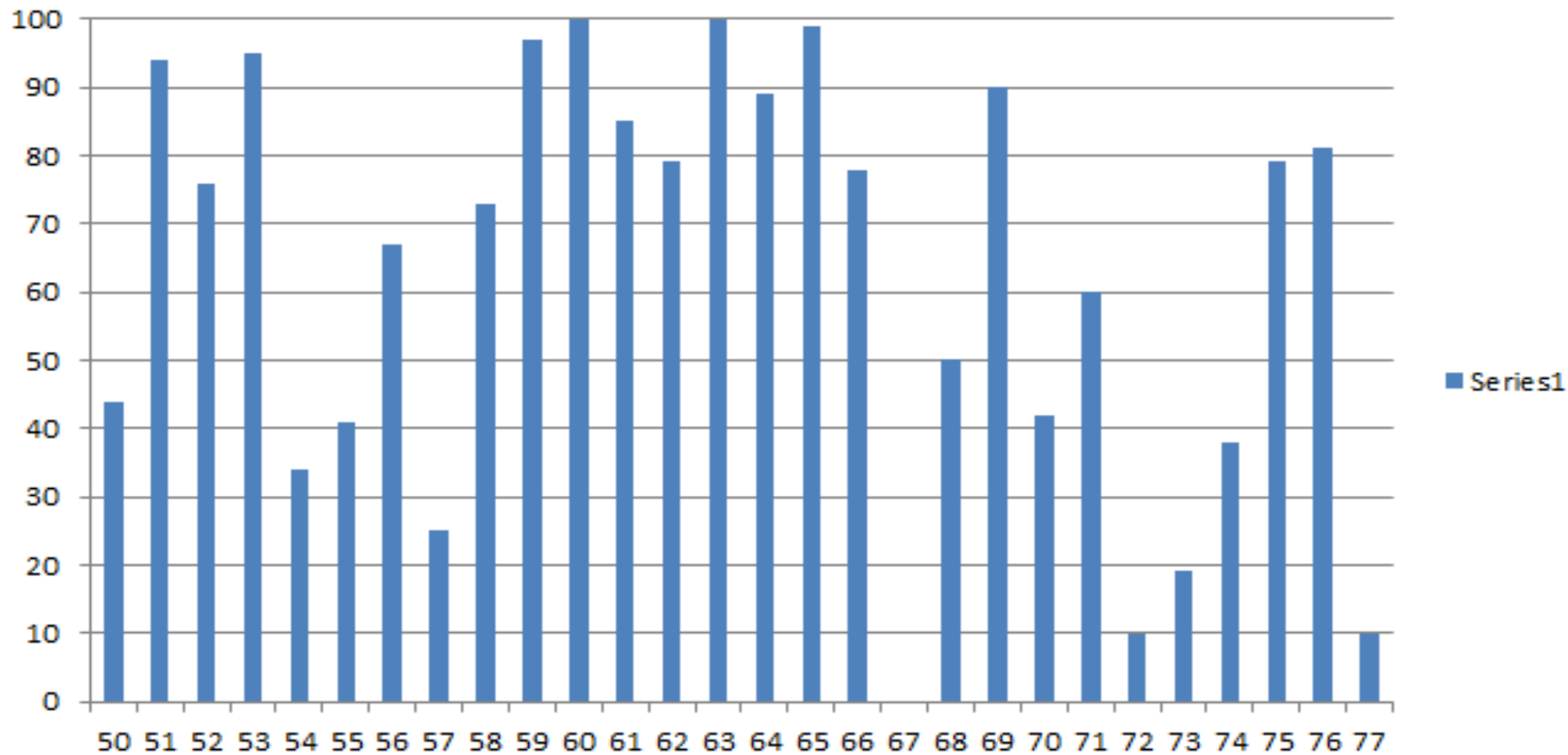
TIER 2 - DIVISION - BASELINE



TIER 2 - DIVISION - BASELINE DATA

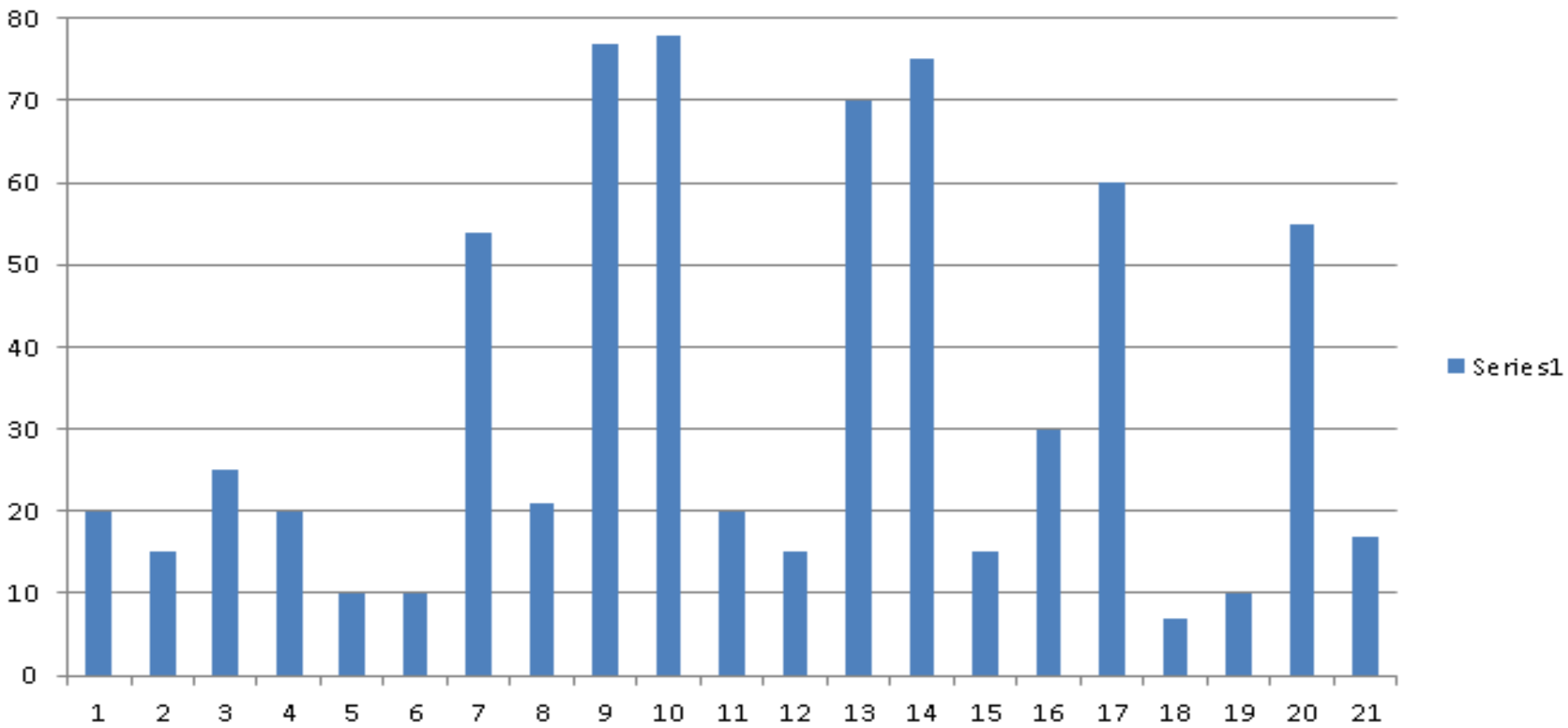


TIER 2 - DIVISION - BASELINE



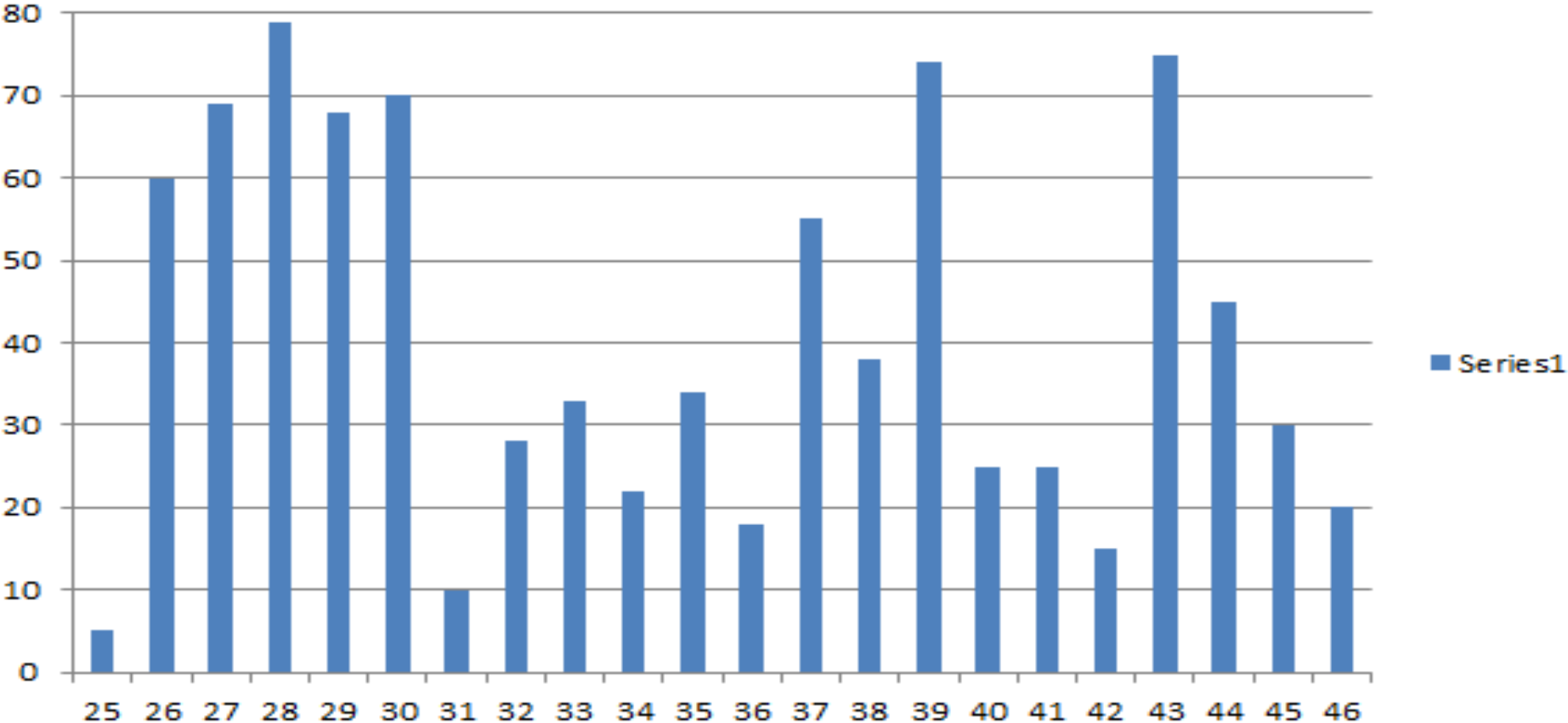
TIER 3 - BASELINE DATA

FRACTION, DECIMAL, PERCENT, CONVERSIONS



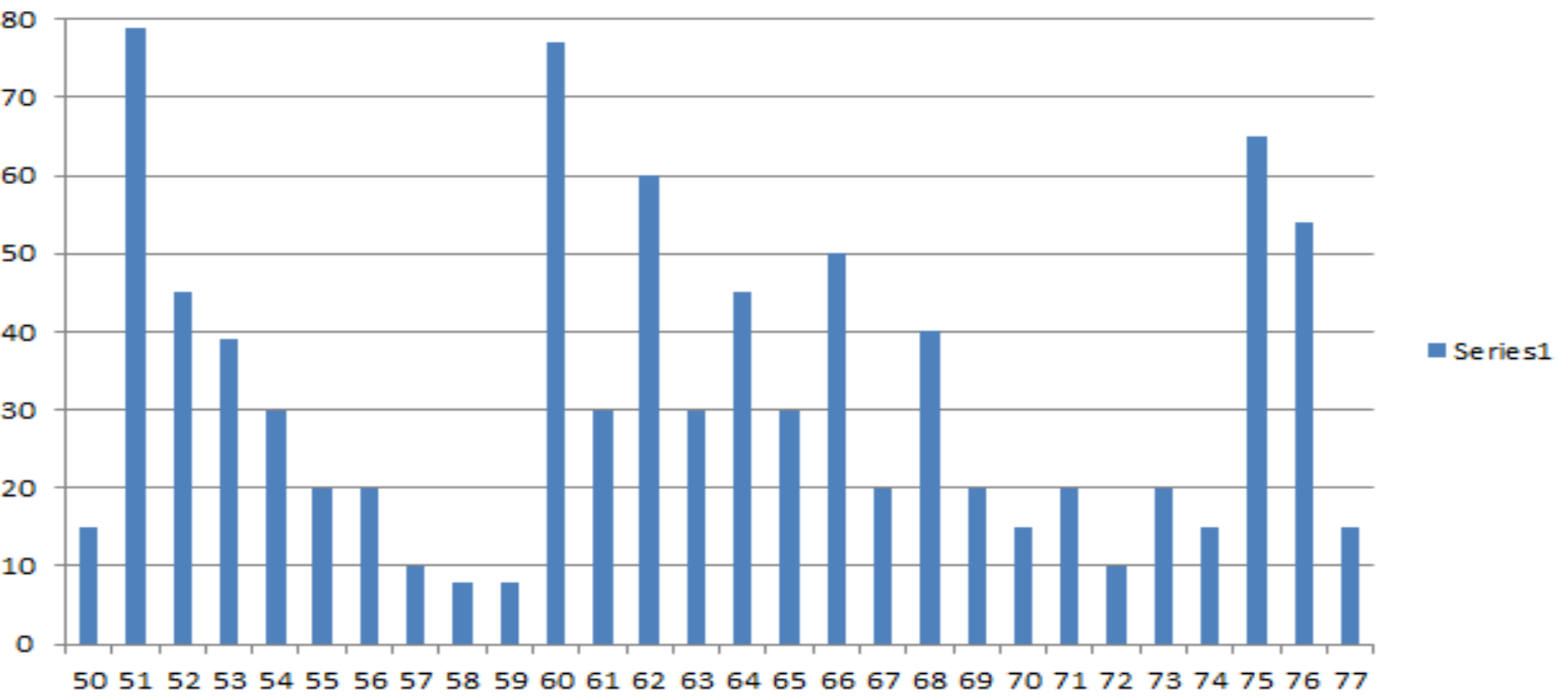
TIER 3 - BASELINE DATA

FRACTION, DECIMAL, PERCENT, CONVERSIONS

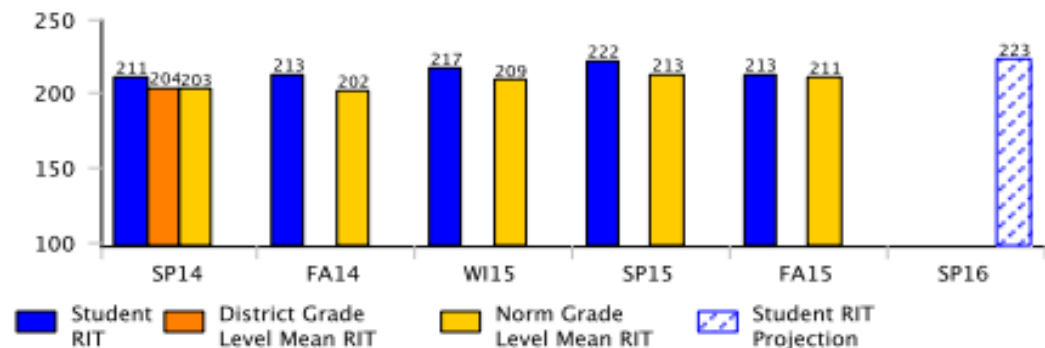


TIER 3 - BASELINE DATA

FRACTION, DECIMAL, PERCENT, CONVERSIONS



Mathematics

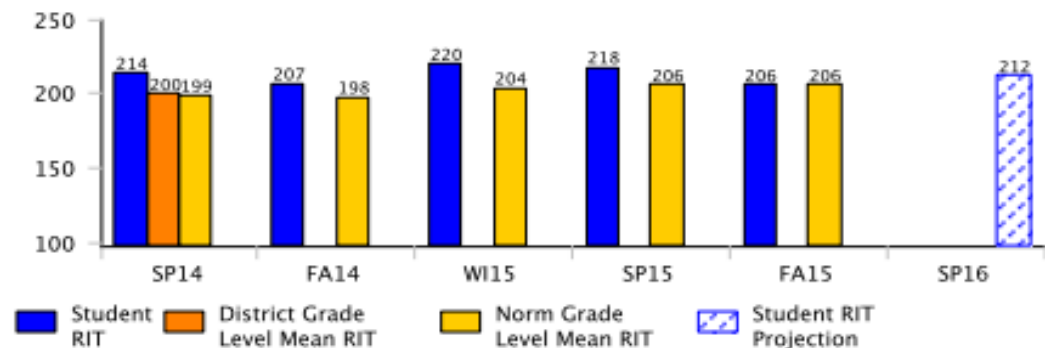


Term/Year	Grade	RIT (+/- Std Err)	RIT Growth	Growth Projection	Percentile Range
FA15	5	210-213-216			46-54-62
SP15	4	219-222-225	9	11	65-72-78
WI15	4	214-217-220			65-72-78
FA14	4	210-213-216			72-79-85
SP14	3	208-211-214	16	13	63-71-78
WI14	3	206-209-212			72-79-85
FA13	3	192-195-198			55-64-72
SP13	2	193-196-199	8	14	53-61-69
WI13	2	197-200-202			79-85-90
FA12	2	185-188-191			73-80-86

Mathematics Goals Performance - Fall 2015-2016

Operations and Algebraic Thinking: HiAvg
 Measurement and Data: LoAvg
 Number and Operations Geometry: Avg
 Avg

Reading



Term/Year	Grade	RIT (+/- Std Err)	RIT Growth	Growth Projection	Percentile Range
FA15	5	203-206-209			42-51-60
SP15	4	215-218-221	11	7	72-79-85
WI15	4	216-220-223			81-86-91
FA14	4	204-207-211			64-72-78
SP14	3	210-214-217	15	9	78-85-89
WI14	3	199-202-206			58-66-74
FA13	3	196-199-203			68-75-81
SP13	2	191-195-198	-2	10	58-66-74
WI13	2	184-187-191			49-57-66
FA12	2	194-197-200			89-92-95

Reading Goals Performance - Fall 2015-2016

Literature: Avg
 Vocabulary Acquisition and Use: Avg
 Lexile® Range: 609-759L
 Informational Text: Avg

TIER 1	TIER 2	TIER 3	TIER 4
<ul style="list-style-type: none"> -Multiplication WAR -Multiplication DICE -XTRA MATH 	<ul style="list-style-type: none"> -DIVISION DICE -DIVISION COVER UP -XTRA MATH 	<ul style="list-style-type: none"> -FDP WAR -FDP MATCH -Conversion Concentration -math-play.com 	<ul style="list-style-type: none"> -Family Math Activity Menu (real-life application) -Xtra Math

Full video of all games can be seen at: longfellow5.weebly.com

Setting Goals For Your Child

(Review during individual conferences in January)

EXAMPLES

- My child will pass Tier 1, multiplication, and get 50/100 on their division facts in Tier 2.
- My child will get from 7/100 division facts, to 60/100 division facts in Tier 2.
- My child will pass division facts in Tier 2, and learn all the conversions, fraction, decimals, and percents in Tier 3.
- My child will go from a 210 to a 215 on their Math MAP assessment.

WHAT IS EXPECTED MOVING FORWARD?

TIER 1,2,3

- Play these games with your child or have your child play these games a 3-4 times per week.
- Have your child take a one 8-minute test per week on the Tier your child is on. Record their score to see the progress being made.
- If your child passes a TIER, sign and send paper in for next Tier.
- Complete 3 activities off the FAMILY MATH ACTIVITY MENU by the January Conference.
- Sign up for a 1 on 1 conference in January and bring this data for us to review as a team.

TIER 4

- Complete ONE activity each week off the FAMILY MATH ACTIVITY MENU.
- Bring all the work to the 1 on 1 conference in January and bring this data for us to review as a team.

FAMILY NIGHT INCENTIVES

- Tentatively, FRIDAY MAY 13th
- 5th Grade Family Fun Night
- Prizes will be raffled off
- Students will earn a ticket for every improvement made.
- Bonus tickets for jumping tiers.
- Bonus tickets for completing Family Math Menu Activities.

INDIVIDUAL CONFERENCES

MONDAY JANUARY 25TH 3:15 - 6:15pm

THURSDAY JANUARY 28TH 5:00 - 8:00pm

QUESTIONS????????????